



# City of Del Mar Agenda Report

TO: Honorable Mayor and City Council Members

FROM: Joseph D. Smith, AICP, Planning and Community Development Director  
Amanda Lee, Principal Planner  
Via CJ Johnson, City Manager

DATE: August 3, 2020

SUBJECT: Adoption of a Resolution to Adopt the City of Del Mar's Sand Compatibility Opportunistic Use Program (SCOUP) Mitigated Negative Declaration and Approve the SCOUP Coastal Development Permit

## REQUESTED ACTION/RECOMMENDATION:

Staff recommends that the City Council adopt the Resolution (Attachment A) to adopt the City of Del Mar's Sand Compatibility Opportunistic Use Program (SCOUP) Mitigated Negative Declaration (EA 20-001) and approve the SCOUP Coastal Development Permit (CDP 20-005). Additional federal and state level approvals will be required.

## DISCUSSION/ANALYSIS:

The "SCOUP" program is a special project that was prioritized by the Del Mar City Council in 2019. The SCOUP plan/environmental document is available for review at:

<http://www.delmar.ca.us/ArchiveCenter/ViewFile/Item/1422>

Approval of the SCOUP will facilitate efforts by the City to replenish beach quality sand on the Del Mar beach as an adaptation measure in order to minimize the effects of projected flooding, erosion, and sea level rise. Beach nourishment provides many benefits including: ecological restoration, beach habitat enhancement, protection of coastal bluffs, flood protection for adjacent public infrastructure/facilities and private homes/businesses, recreational benefits, and preservation of the sandy public beach, which is a free coastal resource that is available for use by individuals of all economic segments. In Del Mar, beach nourishment is also important to protect public beach access, which is available at each street end in the North Beach neighborhood.

Local sea level rise planning efforts that began in 2014 raised community awareness that the Del Mar shoreline is vulnerable to projected flooding, erosion, and sea level rise. In response, the City's adopted Adaptation Plan and accompanying Sediment Management Plan recommended beach nourishment as a high priority adaptation measure to pursue. The strategy also involves actions to pursue more efficient and effective dredging of

---

## City Council Action:

**IT WAS MOVED BY DEPUTY MAYOR GAASTERLAND, SECONDED BY COUNCILMEMBER DRUKER TO ADOPT RESOLUTION 2020-45, "A RESOLUTION OF THE CITY COUNCIL OF THE CITY OF DEL MAR, CALIFORNIA ADOPTING THE MITIGATED NEGATIVE DECLARATION AND APPROVING THE COASTAL DEVELOPMENT PERMIT FOR THE CITY OF DEL MAR'S SAND COMPATIBILITY OPPORTUNISTIC USE PROGRAM TO FACILITATE, COORDINATE, AND MANAGE FUTURE BEACH NOURISHMENT ALONG THE CITY OF DEL MAR SHORELINE GENERALLY BETWEEN 15th STREET/SOUTH END OF POWERHOUSE PARK AND THE NORTHERLY CITY BOUNDARY, INCLUDING ACTIVITY IN THE SAN DIEGUITO LAGOON RIVER INLET, DEL MAR, CALIFORNIA." (VOTE 5-0)**

quality beach sand trapped in the San Dieguito Lagoon river inlet and improved overall sand retention and management. The following documents identify the local vulnerabilities and selected adaptation strategies in greater detail:

- **City of Del Mar Coastal Hazards, Vulnerability and Risk Assessment (2016) and Addendum (2018):** Technical report documents prepared for the City by Environmental Science Associates (ESA) that identifies vulnerable areas in Del Mar subject to sea level rise, storm surge, flooding (ocean and river), and erosion (beach and coastal bluff). <http://www.delmar.ca.us/DocumentCenter/View/2455> and <http://www.delmar.ca.us/DocumentCenter/View/3852/Addendum-2018-to-the-initial-Vulnerability-Assessment-2016>
- **City of Del Mar Sea Level Rise Adaptation Plan (2018):** Land use plan document prepared for the City by ESA with adaptation strategies to address and minimize the risk of coastal hazards via beach nourishment, sand management/retention, river channel dredging, and flood management adaptation strategies. <https://www.delmar.ca.us/DocumentCenter/View/3580/Revised-Adaptation-Plan-per-Council-May-21>
- **City of Del Mar Sediment Management Plan (2018):** Technical report prepared for the City by ESA with long term strategies specific to beach nourishment and sediment management accounting for local sediment dynamics along the shoreline and in relationship to the San Dieguito Lagoon. [https://www.delmar.ca.us/DocumentCenter/View/3578/ESA\\_revisedDRAFT-Del-MarSediment-Management-Plan-May2018\\_clean](https://www.delmar.ca.us/DocumentCenter/View/3578/ESA_revisedDRAFT-Del-MarSediment-Management-Plan-May2018_clean)

In June 2019, the City executed a consultant contract with Moffatt & Nichol for development of a multi-year shoreline adaptation program over a period of 3-5 years. The contract includes various shoreline adaptation-related tasks, most notably including preparation of the SCOUP beach nourishment program and development of a living levee conceptual design. To date, the work has been only partially funded to cover the following:

- Submittal of a grant application to the State (December 2019) for grant funds that would be applied towards future work related to a beach nourishment project. If the City is selected, State grant funding would be available in September 2021.
- Preparation of the SCOUP environmental document and associated mitigation, monitoring, and reporting program for local approval in August 2020.

On July 14, 2020, the Planning Commission unanimously recommended approval of the MND and SCOUP program as set forth in the SCOUP plan/MND document: <http://www.delmar.ca.us/ArchiveCenter/ViewFile/Item/1422>

The proposed SCOUP outlines a plan for the City to coordinate and implement beach nourishment projects. Having an approved SCOUP in place will allow the City to most effectively capitalize on opportunities when beach-quality sand is available in the region for placement on the Del Mar beach (i.e. from projects that involve grading or dredging). The most likely source of beach quality sand in Del Mar is the San Dieguito Lagoon.

Currently, Southern California Edison dredges beach quality sand from the San Dieguito river inlet and places it on the Del Mar beach approximately every other year to satisfy a long-term mitigation requirement that was imposed by the Coastal Commission. In addition, beginning in approximately two years, the San Diego Association of Governments (SANDAG) and San Dieguito River Park Joint Powers Authority (SDRPJPA) will be required to dredge and place sand from the San Dieguito Lagoon onto the Del Mar beach as a mitigation requirement for the W-19 project. These mitigation projects involve a relatively small volume of beach sand (10,000-20,000 cubic yards).

The City's SCOUP plan accounts for this planned beach nourishment (that is performed by other agencies) within the stated total maximum volume for the SCOUP – 180,000 cubic yards (cy) over a 5-year period, which is the maximum timeframe the Coastal Commission will allow via the required State-issued CDP. Moving forward the City intends to work with the aforementioned agencies and State Fairgrounds to explore partnerships and agreements to achieve greater efficiencies with each dredge event to most effectively coordinate the timing and increase the quantities placed on the beach with each event. However, it is important to note that individual beach nourishment projects are anticipated to not exceed 50,000 cy; and cumulatively will be limited to a maximum total quantity of 180,000 cy of sand placed on Del Mar Beach over a five year period (that will coincide with the State-issued CDP five year time frame).

In terms of sand placement, the SCOUP program identifies a “sand placement envelope” where sand may be placed by future beach nourishment projects. The sand placement envelope on the Del Mar beach extends from the boundary of the northerly City limit adjacent to the Del Mar north bluffs (located north of the San Dieguito River inlet) down to the segment of Del Mar beach that is adjacent to the southerly limit of Powerhouse Park (located north of 15<sup>th</sup> Street towards the center of Del Mar's shoreline). The shoreline south of Powerhouse Park is being avoided for consistency with past nourishment activities and to avoid potential nearshore environmental resources located further south (i.e. surfgrass, kelp, and algae). Nourishment sites would be monitored over time to minimize the potential for impacts to environmental resources.

In accordance with the SCOUP, all sand material would be analyzed to ensure beach quality prior to placement of any sand on the Del Mar beach. This is done through a “Sampling and Analysis Plan and Report” to demonstrate the material is suitable beach sand per the following criteria:

- Has similar gradation as the existing sand within the beach profile and slightly coarser if possible, as characterized by the gradation envelope;
- Is not suspected of containing hazardous chemicals per Environmental Protection Agency (EPA) Tier I or II assessment;
- Is free of trash and debris based on visual inspection;
- Reasonably matches the color of natural beach sand after exposure to the marine environment;
- Is less than 10 percent manufactured sand;
- Is a minimum 75 percent sand (optimally 80 percent sand or greater) and with a percent sand content within 10 percent of the grain size envelope of the beach profile; and
- Will not form a hardpan after placement.

The SCOUP includes a monitoring plan that will be required of beach nourishment projects as applicable to address potential changes in beach profiles, surfing conditions, turbidity, grunion, and trash/debris (as defined below and further described in the MND):

- Beach profiles – A cross-section through the beach perpendicular to the beach slope; that may include dune face or seawall, extend across the beach, and run seaward into nearshore zone.
- Surf Monitoring – Qualitative monitoring of surf conditions in proximity to the location where large volumes of sand (more than 20,000 cy) are placed.
- Turbidity – The measure of suspended solid particles in water that can affect water clarity during sand placement.
- Grunion – Monitoring for the presence of California grunion, a sardine-sized fish species present only on the California and Baja California coastline, known to spawn exclusively on sandy beaches; and that is identified by the State as a species of concern.
- Trash and Debris – Removal of trash/debris that may be present in sand source material.

**SCOUP MND Table 5-1: Overview of Monitoring**

<b><u>Monitoring Metric</u></b>	<b><u>Pre-Construction</u></b>	<b><u>During Construction</u></b>	<b><u>Post-Construction</u></b>
<b><u>Beach Profiles</u></b>	Between 1 year and 30 days prior to project.	Not applicable (N/A)	Immediately following construction, and again within 6 months or during semi-annual regional beach sand monitoring activity.

<b><u>Surf Conditions</u></b>	Qualitative surf condition information gathered by City lifeguards.	Weekly during sand placement of more than 20,000 cy.	Up to 2 weeks after sand placement during large placement events.
<b><u>Turbidity</u></b>	N/A	Daily during placement from a high vantage point on land (e.g., North Bluffs and Powerhouse Park).	N/A
<b><u>Grunion (required by mitigation measure BIO-1)</u></b>	If habitat is suitable and project is scheduled between March and August, then 2 to 3 weeks prior to construction before and/or during predicted grunion run closest to project initiation.	If construction is scheduled between March and August, then every 2 weeks during spawning season. Monitoring is dictated by tides and lunar cycle.	N/A
<b><u>Trash/Debris Removal</u></b>	N/A	For land-based sand sources, spotter on-site daily to observe excavation and/or placement of material to manage trash/debris prevention and removal.	N/A

The SCOUP would not result in significant impacts in the following areas: aesthetics, agriculture and forestry resources, air quality, cultural resources, energy, geology and soils, greenhouse gas emissions, hazards and hazardous materials, land use and planning, mineral resources, noise, population and housing, transportation, tribal cultural resources, utilities and service systems, and wildfire. SCOUP impact areas that were shown to have a less than significant impact with mitigation were biological resources, hydrology and water quality, public services, and recreation.

Mitigation is set forth in the MND that will effectively minimize the potential for any effects to grunion/biological resources, water quality/hydrology, lifeguard public safety services, and beach use and recreation. In addition to the monitoring plan identified above, applicable regulatory requirements, standard construction procedures, and a mitigation, monitoring and reporting program will be applied to any future beach nourishment project that is conducted in accordance with the SCOUP program. Project-level review of the methods proposed to transport and place the sand on the beach will also occur prior to approval of individual beach nourishment projects. Therefore, the MND found that the proposed SCOUP would not result in significant impacts because the program

components and mitigation measures described above will be required of all future beach nourishment projects to avoid or reduce any potential impacts to below a level of significance. The City Council is asked to adopt the SCOUP MND and approve the associated Coastal Development Permit.

As a next step after City Council approval, the City must obtain additional permit approvals for the SCOUP from the California Coastal Commission, United States Army Corps of Engineers (USACE), State Lands Commission, and San Diego Regional Water Quality Control Board (RWQCB). Staff intends to pursue these actions when project funding becomes available in a future budget cycle to cover any associated permit application fees and monitoring requirements. The proposed SCOUP plan and mitigation, monitoring, and reporting program has incorporated all monitoring requirements that are anticipated to be imposed based on early coordination meetings that occurred with these agencies in fall 2019 and during circulation of the MND for public review in spring 2020.

FISCAL IMPACT:

As a result of the COVID-19 budget cuts for FY2020-2021, this special project will be on hold following the requested City Council approval. The requested action would not result in a fiscal impact to the City because it does not commit any City funds. At a future date, the City Council will be asked to allocate funds to resume consultant tasks per the existing contract and cover the SCOUP permit fees that are required for approval by the State Lands Commission (estimated cost \$3,500) and RWQCB (estimated cost \$167,150). (No fee is charged by the Coastal Commission or the USACE.) Future City Council authorization and funding will also be needed to cover beach nourishment project costs to cover mitigation, monitoring, and reporting (estimated cost \$62,000-\$80,000) and additional State Lands Commission and RWQCB permit fees (estimated cost \$18,500-\$100,000) for each individual beach nourishment project.

ENVIRONMENTAL REVIEW:

In accordance with the California Environmental Quality Act (CEQA), the SCOUP Mitigated Negative Declaration (Environmental Assessment EA 20-001/SCH # 2020040181) was prepared by AECOM and Moffatt & Nichol on behalf of the City as lead agency. The Final MND includes clarifying changes shown in a summary table in the MND document preface and red underlined text. The Final MND is available for review at:

<http://www.delmar.ca.us/ArchiveCenter/ViewFile/Item/1422>

NEXUS TO CITY COUNCIL GOALS AND PRIORITIES:

The “SCOUP” program is a special project that was prioritized by the Del Mar City Council in 2019. It will facilitate implementation of beach nourishment which was identified by the City Council as the highest priority adaptation measure to minimize risk from projected flooding, erosion, and sea level rise.

ATTACHMENT:

Attachment A – Resolution Adopting the MND and Approving the SCOUP CDP

RESOLUTION NO. 2020-XX

A RESOLUTION OF THE CITY COUNCIL OF THE CITY OF DEL MAR, CALIFORNIA ADOPTING THE MITIGATED NEGATIVE DECLARATION AND APPROVING THE COASTAL DEVELOPMENT PERMIT FOR THE CITY OF DEL MAR'S SAND COMPATIBILITY OPPORTUNISTIC USE PROGRAM TO FACILITATE, COORDINATE, AND MANAGE FUTURE BEACH NOURISHMENT ALONG THE CITY OF DEL MAR SHORELINE GENERALLY BETWEEN 15<sup>th</sup> STREET/SOUTH END OF POWERHOUSE PARK AND THE NORTHERLY CITY BOUNDARY, INCLUDING ACTIVITY IN THE SAN DIEGUITO LAGOON RIVER INLET, DEL MAR, CALIFORNIA

WHEREAS, the "SCOUP" is a special project that was prioritized by the Del Mar City Council in 2019 as an adaptation measure to minimize risk of projected flooding, beach erosion, and sea level rise; and

WHEREAS, approval of the SCOUP will facilitate efforts by the City to replenish beach quality sand on the Del Mar beach as an adaptation measure to minimize the effects of projected flooding, erosion, and sea level rise; and

WHEREAS, the SCOUP Mitigated Negative Declaration (EA 20-001/State Clearinghouse Document SCH # 2020040181), including a Mitigation, Monitoring and Reporting Program was prepared by AECOM with assistance from Moffatt & Nichol on behalf of the City as lead agency in accordance with the California Environmental Quality Act (CEQA); and

WHEREAS, beach nourishment provides many benefits including: ecological restoration, beach habitat enhancement, protection of coastal bluffs, flood protection of adjacent public infrastructure/facilities and private homes/businesses, recreational benefits, and preservation of the sandy public beach, which is free coastal resource that is available for use by individuals of all economic segments; and

WHEREAS, in Del Mar, beach nourishment is also important to preserve and protect public beach access, which is available at each of the street ends that are located in the North Beach neighborhood; and

WHEREAS, as a result of local sea level rise planning efforts (2014-present), the community is aware that the Del Mar shoreline is vulnerable to projected flooding, erosion, and sea level rise; and

WHEREAS, the City's adopted Sea Level Rise Adaptation Plan and accompanying Sediment Management Plan recommended beach nourishment, more efficient/effective

dredging of quality beach sand that gets trapped in the San Dieguito Lagoon river inlet, and improved overall sand retention/management as priority near-term adaptation measures to pursue; and

WHEREAS, having an approved SCOUP in place will allow the City to coordinate and implement beach nourishment projects over the next 5 years and most effectively capitalize on opportunities when beach-quality sand is available for placement on the Del Mar beach; and

WHEREAS, on July 14, 2020, the Planning Commission recommended approval of SCOUP Coastal Development Permit (CDP20-005) and adoption of the SCOUP Mitigated Negative Declaration and Mitigation, Monitoring and Reporting Program; and

WHEREAS, on July 23, 2020, a notice of public hearing was posted and published and mailed notice was provided informing the public of the public hearing on August 3, 2020.

NOW, THEREFORE, BE IT RESOLVED by the City Council of the City of Del Mar, California, that the City Council does hereby adopt the SCOUP Mitigated Negative Declaration (SCH # 2020040181) and associated Mitigation, Monitoring and Reporting Program as lead agency in accordance with the California Environmental Quality Act (CEQA) based on its findings:

1. That upon a review of the whole record before the Council there is no substantial evidence that the project will have a significant effect on the environment.
2. The SCOUP Mitigated Negative Declaration (SCH # 2020040181) reflects the Council's independent judgment and analysis.

NOW, THEREFORE, BE IT FURTHER RESOLVED by the City Council of the City of Del Mar, California, that the City Council does hereby approve the SCOUP Coastal Development Permit (CDP 20-005) based on the following findings for permit approval:

- 1. That the use for which the Coastal Development Permit is applied is permitted within the zone in which the property is located.**

The SCOUP will facilitate future beach nourishment activity on the Del Mar beach, which is an allowed use on the public beach and State tidelands subject to permit approvals from other agencies including the California Coastal Commission, State Lands Commission, Regional Water Quality Control Board, and United States Army Corps of Engineers. The proposed SCOUP and future beach nourishment activity that would be facilitated is an allowed use in conformance with the City of Del Mar Community Plan environmental management policies and Safety Element and consistent with the regulations of the City's adjacent Beach Overlay Zone and Lagoon Overlay Zone.

**2. That the proposal meets the criteria of the applicable chapters of this Title.**

The proposed SCOUP, as designed and conditioned, meets the criteria of the applicable chapters of the Del Mar Zoning Code and certified Local Coastal Program, specifically: DMMC Chapters 30.50 (Beach Overlay Zone), 30.53 (Lagoon Overlay Zone), 30.61 (Public Access) and 30.75 (Coastal Development Permits). This consistency is described in detail in the following finding.

**3. That the granting of such Coastal Development Permit will be in conformity with the certified City of Del Mar Local Coastal Program (LCP).**

The Coastal Development Permit, as conditioned, will be in conformity with the certified City of Del Mar Local Coastal Program. The SCOUP program has been designed and located so as to not have adverse impacts on public safety, public access, recreation, and public scenic views of the ocean. The SCOUP program will be subject to approval of a State-issued CDP in order to become effective. Furthermore, the SCOUP is consistent with the City's Beach Overlay Zone (DMMC Chapter 30.50) and Lagoon Overlay Zone (DMMC Chapter 30.53) and is consistent with the Local Coastal Program and City of Del Mar Community Plan (General Plan) policies and regulations for environmental management and safety, including minimization of hazards relating to projected flooding, erosion, and sea level rise through a natural adaptation measure.

**4. That for all development proposals located seaward of the first public roadway, the proposed development is consistent with and implements the applicable requirements for provision of public access contained in this Title and in the public access and public recreation policies of Chapter 3 of the California Coastal Act.**

The SCOUP program is consistent with and implements the applicable requirements for provision of public access contained in the Del Mar Zoning Code and in the public access and public recreation policies of Chapter 3 of the California Coastal Act. The project is located on public tidelands and, therefore, is within the permit authority of the Coastal Commission. Public access to the shoreline will not be impeded by the SCOUP or by future beach nourishment that will be facilitated by the SCOUP program. The public's interest in gaining access to the shoreline will be enhanced by future beach nourishment that will be facilitated, coordinated, and managed by the SCOUP program. This will include coordination of beach nourishment on Del Mar beach that are coordinated by other agencies including Southern California Edison for ongoing San Dieguito Lagoon restoration mitigation activity and prospective beach nourishment by the San Dieguito River Valley Joint Powers Authority (JPA) and San Diego Association of Governments (SANDAG) for the W-19 project San Dieguito Lagoon restoration project.

5. **That for all development proposals involving the construction or placement of a shoreline protection device, that the proposed development is consistent with and implements the applicable requirements of the Beach Overlay Zone and Setback Seawall Zone provisions contained in this Title and is consistent with and implements the provisions of the Chapter Three Policies of California Coastal Act.**

The SCOUP program would facilitate future beach nourishment, which is a natural shoreline adaptation strategy that was studied and adopted as a priority strategy in the City's Adaptation Plan and Community Plan and within pending Local Coastal Program Amendments (adopted October 2018). No shoreline protection devices are proposed.

6. **That the proposal is consistent with and implements the provisions of public view protection Policies IV-22 through IV-27 of the City of Del Mar LCP Land Use Plan.**

The SCOUP program is consistent with and implements the provisions of public view protection policies of the City of Del Mar Local Coastal Program, including those of the LCP Land Use Plan. The MND prepared for the SCOUP includes project features and mitigation measures to ensure that any future placement of beach sand would not adversely affect public scenic views, the scenic qualities of coastal resources, or the sightlines and views needed by the Community Services Department to maintain public safety along the beach. Due to its location and design, the project would not adversely affect public views.

7. **That for all development proposals on sites with identified wetland resources, that the proposed development is consistent with and implements the provisions of the Lagoon Overlay Zone as contained within the City of Del Mar Local Coastal Program Implementing Ordinances and Land Use Plan.**

The SCOUP program would facilitate future beach nourishment activity on a public beach, on public tidelands, and within the San Dieguito Lagoon river inlet. This type of activity is consistent with the policies and requirements of the City's certified Local Coastal Program, including City's Beach Overlay Zone and Lagoon Overlay Zone. The SCOUP program is also consistent with the City of Del Mar Community Plan environmental management policies, including the City's Safety Element as amended in March 2019 to specifically reference the City's adopted Adaptation Plan and associated adopted Local Coastal Program Amendments that were prepared to address projected flooding, erosion, and sea level rise and demonstrate the City's plan to adapt accordingly to minimize the risk of hazards. (Coastal Commission action on the LCPAs adopted October 2018 is pending.)

PASSED, APPROVED AND ADOPTED by the City Council of the City of Del Mar, California, at a Regular Meeting held this 3rd day of August, 2020.

---

Ellie Haviland, Mayor  
City of Del Mar

APPROVED AS TO FORM:

---

Leslie E. Devaney, City Attorney  
City of Del Mar

ATTEST AND CERTIFICATION:

STATE OF CALIFORNIA  
COUNTY OF SAN DIEGO  
CITY OF DEL MAR

I, ASHLEY JONES, Administrative Services Director/City Clerk of the City of Del Mar, California, DO HEREBY CERTIFY, that the foregoing is a true and correct copy of Resolution No. 2020-XX, adopted by the City Council of the City of Del Mar, California, at a Regular Meeting held the 3rd day of August, 2020, by the following vote:

AYES:

NOES:

ABSENT:

ABSTAIN:

---

Ashley Jones, Administrative Services  
Director/City Clerk  
City of Del Mar

# Item 11: Sand Compatibility Opportunistic Use Program (SCOUP)

Del Mar City Council Meeting  
August 3, 2020



CITY OF DEL MAR  
CALIFORNIA

# Overview

---

- **SCOUP program is a City Council priority special project**
- **City Council is being asked to:**
  - **Adopt the SCOUP Mitigated Negative Declaration (CEQA document)**
  - **Approve the SCOUP Coastal Development Permit**

# Background

---

- **SCOUP will facilitate future beach nourishment projects**
- **Highest priority adaptation strategy to maintain public beach and minimize risk of projected flooding, erosion, and sea level rise**
- **Local approval will be followed by federal/state approval actions when budget is available**

# What is the SCOUP plan?

- Will allow up to 180,000 cubic yards of sand to be placed on beach over 5 year period via future projects
- Accounts for all beach nourishment projects during the 5 years
- All placement will occur on Del Mar beach north of 15<sup>th</sup> Street
- Any potential impacts to environment will be avoided or mitigated

# Beach Placement Envelope



# Monitoring Plan

- **Beach profiles – cross-section across beach seaward into nearshore zone – pre & post projects**
- **Surf Monitoring – qualitative monitoring of conditions near placed sand (if 20,000 cy or more)- weekly during project and 2 weeks after**
- **Turbidity – measure of suspended solid particles in water that can affect water clarity – occurs daily during sand placement**
- **Grunion – sardine-sized fish species (State species of concern) present only on CA coast that spawns exclusively on sandy beaches (if applicable)**

# Additional MMRP Measures

---

- **Maintain safe public beach access - horizontal & vertical**
- **Avoid blocking line-of-site for lifeguards**
- **Post signage warning that steep sand slopes could form naturally**
- **Beach maintenance to knock down dangerous scarps if they form (naturally formed steep drops in sand level)**

# Why is this approval needed now?

---

- **Project will be on hold (after Council action) - budget constraints**
- **Council approval demonstrates City commitment to beach nourishment adaptation -- no commitment of funds at this time**
- **City has the following items pending with the State:**
  - **LCPA related to Sea Level Rise Adaptation – Coastal Commission**
  - **\$150k Grant Application – State Parks Division of Boating & Waterways**
  - **State fee schedule for SCOUP/beach nourishment projects - SWRCB**

# Requested Action

---

**Adopt the Resolution in Attachment A to:**

- **Adopt the SCOUP Mitigated Negative Declaration and Mitigation, Monitoring, and Reporting Program (EA 20-001)**
- **Approve SCOUP Coastal Development Permit (CDP 20-005)**

# Projected Costs – Permits & MMRP

At least \$11,000 for SCOUP; \$100,000 for beach nourishment projects

- USACE and Coastal Commission – no fee (SCOUP + each project)
- State Lands Commission - \$4500 (SCOUP + each project)
- RWQCB - \$5200 SCOUP + \$2600 each project (if fee reduced)
- MMRP - \$80,000 (each project) + CEQA filing fee \$1125 (each project)

# Beach Nourishment by other Agencies

- San Dieguito Lagoon Restoration (Southern CA Edison) – every other year places approx. 10,000-20,000 cy dredged from San Dieguito Lagoon river inlet
- W-19 mitigation (SDRVJPA & SANDAG) – In 2-3 years (within 1 yr of end to their construction) must place 5,000 cy of beach quality sand on beach; then 5,000 cy every 10 years until 30,000 cy total is placed – sand from San Dieguito Lagoon river inlet
- City to coordinate with agencies to increase quantities per dredge

# Environmental Report Conclusions

---

MND concluded a less than significant impact (with mitigation, monitoring, and reporting program):

- Biological resources
- Hydrology and water quality
- Public Services
- Recreation

There will be no impacts to any other environmental issue areas

# Sampling & Analysis Report Required

---

All material will be analyzed for beach quality prior to placement:

- Sand must have similar gradation and slightly coarser, if possible
- No suspected hazardous chemicals
- Free of trash and debris based on visual inspection
- Must reasonably match color of natural beach (once exposed to marine environment)
- Must contain less than 10% manufactured sand
- Content of material must be at least 75% sand

<b>Monitoring Metric</b>	<b>Pre-Construction</b>	<b>During Construction</b>	<b>Post-Construction</b>
<b>Beach Profiles</b>	Between 1 year and 30 days prior to project.	Not applicable (N/A)	Immediately following construction, and again within 6 months or during semi-annual regional beach sand monitoring activity.
<b>Surf Conditions</b>	Qualitative surf condition information gathered by City lifeguards.	Weekly during sand placement of more than 20,000 cy.	Up to 2 weeks after sand placement during large placement events.
<b>Turbidity</b>	N/A	Daily during placement from a high vantage point on land (e.g., North Bluffs and Powerhouse Park).	N/A
<b>Grunion (required by mitigation measure BIO-1)</b>	If habitat is suitable and project is scheduled between March and August, then 2 to 3 weeks prior to construction before and/or during predicted grunion run closest to project initiation.	If construction is scheduled between March and August, then every 2 weeks during spawning season. Monitoring is dictated by tides and lunar cycle.	N/A
<b>Trash/Debris Removal</b>	N/A	For land-based sand sources, spotter on-site daily to observe excavation and/or placement of material to manage trash/debris prevention and removal.	N/A

# Consistent with Del Mar's Sediment Management Plan

- **SCOUP is consistent with previously adopted Sediment Management Plan, Adaptation Plan, and prior STAC recommendations**
- **SMP estimated City needs 190,000 cy every 10 years; and with 1 ft of SLR may need up to 380,000 cy every 10 years to maintain walkable beach**
- **Allows up to 180,000 cy in 5 year period – time starts with CCC approval**
- **5 year permit limit is imposed by Coastal Commission**



**From:** Ed Williams <edsmail@cox.net>  
**Sent:** Monday, August 03, 2020 11:32 AM  
**To:** City Clerk Mail Box  
**Cc:** Ed Williams  
**Subject:** SCOUP

**CAUTION:** This email originated from outside of the organization. Do not click links or open attachments unless you recognize the sender and know the content is safe.

Dear Sirs, My comments are in relation to the SCOUP item on the agenda for today's hearing.

I think this is a good idea and the program should go ahead.

I do not think sand should be placed North of the river mouth. It just goes back into the lagoon. Sand should only be placed intermittently south of the river mouth.

Te lagoon area Needs Desperately to be dredged. I was told at a meeting a while back that it is being dredged regularly. That was a lie. It has not been dredged in several years and now it is WAY TOO full of sand. Put it back on the beach where it came from and where it belongs.

Thank you for considering my thoughts and recommendations.

Ed Williams  
2312 Ocean Front  
Del Mar

# PROOF OF PUBLICATION (2015.5 C.C.P.)

State Of California,  
County of San Diego

I am a citizen of the United States and a resident of the County aforesaid: I am over the age of eighteen years, and not a party to or interested in the above-entitled matter. I am an authorized representative of

## Del Mar Times

a newspaper of general circulation, printed and published weekly in the County of San Diego, and which newspaper has been adjudged a newspaper of general circulation by the Superior Court of the County of San Diego, State of California, under the date of 05/28/2010, Case Number #37-2010-00051582-CU-PT-NC; that the notice, of which the annexed is a printed copy (set in type not smaller than nonpareil), has been published in each regular and entire issue of the said newspaper and not in any supplement thereof on the following Dates, to-wit:

**July 23, 2020**

I certify (or declare) under the penalty of perjury that the foregoing is true and correct.

Dated: **July 23, 2020**  
At: San Diego, California



Signature  
Cris Gaza  
UT Community Press

## Proof of Publication

### CITY OF DEL MAR NOTICE OF PUBLIC HEARING

Notice is hereby given that the City of Del Mar City Council will hold a public hearing on Monday, **August 3, 2020 at 4:30 p.m.** (or as soon thereafter as practicable), by teleconference only, where the City Council will be asked to adopt a Resolution to adopt the Mitigated Negative Declaration (MND) and approve a Coastal Development Permit (CDP) for the City of Del Mar's Sand Compatibility Opportunistic Use Program (SCOUP)

**Project:** City of Del Mar's Sand Compatibility Opportunistic Use Program (SCOUP) EA 20-001/CDP 20-005

**Location:** City of Del Mar shoreline, including the San Dieguito river inlet

**Applicant:** City of Del Mar, Planning Department

**Contact Person:** Amanda Lee, Principal Planner - ale@delmar.ca.us

**Environmental Status:** A Mitigated Negative Declaration (SCH #2020040181) was prepared by the City as lead agency.

**Description:** A request for adoption of a Resolution to adopt the Mitigated Negative Declaration and approve a Coastal Development Permit for the City of Del Mar's SCOUP program. The Planning Commission recommended approval on July 14, 2020. Approval of the SCOUP will facilitate efforts to replenish beach quality sand on the Del Mar beach as an adaptation measure in order to minimize the effects of projected flooding, erosion, and sea level rise. Additional federal and state level approvals will be required.

### PUBLIC HEARING DATE, TIME AND LOCATION:

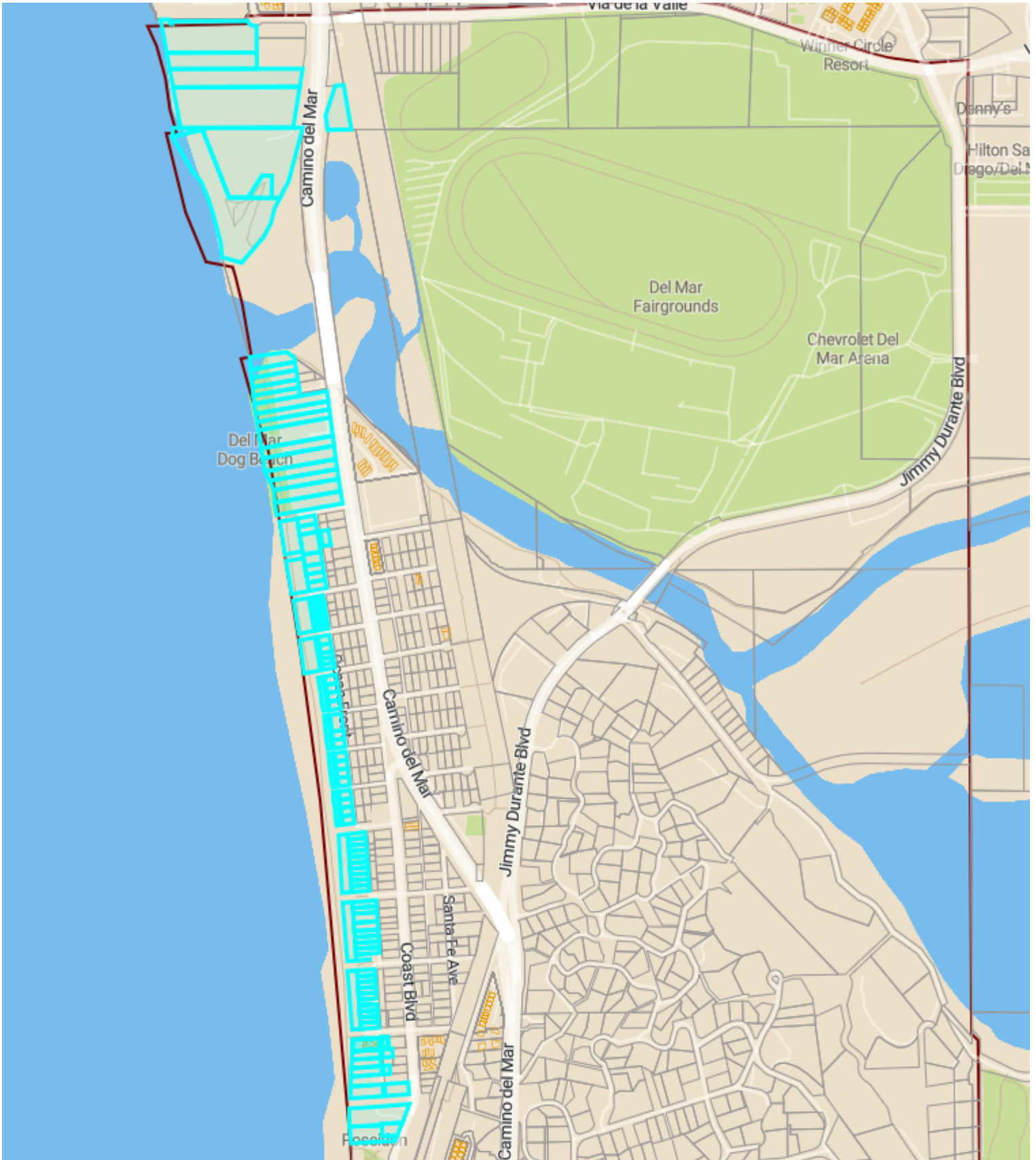
This item is scheduled on the agenda for a public hearing before the City Council on **August 3, 2020 at 4:30 p.m.** By teleconference only <http://delmar.12milesout.com/Video/Live> and on Cable TV Spectrum Ch. 24, AT&T Ch. 99 starting at 4:30 PM.

Those desiring to be heard in favor of or in opposition to this item will be given an opportunity to do so by commenting telephonically during the meeting or by submitting written comment. Those desiring to make a telephonic comment should visit the City's website for instructions and to submit a tele-comment request form by 12:00 PM the day of the meeting: <http://www.delmar.ca.us/publiccomment>. Comments submitted via email should be sent to [cityclerk@delmar.ca.us](mailto:cityclerk@delmar.ca.us) by 12:00 PM the day of the meeting. For emailed comments, the subject line of your email should clearly state the item number you are commenting on. All comments received by the deadline will be transmitted to the City Council prior to the start of the meeting. Written comments may also be submitted by mail to the City Council at 1050 Camino del Mar, Del Mar, CA, 92014. Attention: Administrative Services Director/City Clerk. On any correspondence, please reference the hearing title and date. Materials related to this public hearing, will be available at least 72 hours in advance of the meeting on the City's website only, as City Hall and the Del Mar Library are currently closed to the public. <http://www.delmar.ca.us/AgendaCenter>.

Under California Government Code 65009, if you challenge the nature of the proposed action in court, you may be limited to raising only those issues you or someone else raised telephonically at the public hearing described in this notice, or written correspondence delivered to the City at, or prior to, the public hearing.

/s/ Ashley Jones, Administrative Services Director/City Clerk  
Date: 7/16/2020  
DM7707552 7/23//2020

# Beach Front Map



1" = 962 ft

Sub Title

07/20/2020



This map may represent a visual display of related geographic information. Data provided here on is not guarantee of actual field conditions. To be sure of complete accuracy, please contact the responsible staff for most up-to-date information.

AddressLin AddressLin AddressLin AddressLine4

2.99E+09 STENSRUD 13491 SUN POWAY CA 92064  
2.99E+09 CURRENT F 101 BORDI DEL MAR CA 92014-2046  
2.99E+09 BORDER 2( ATTN: MA 550 E HOSPITALITY LN #300 SN BERNRDNO CA 92408  
2.98E+09 CURRENT F 929 BORDI DEL MAR CA 92014  
2.98E+09 STENSRUD 13491 SUN POWAY CA 92064  
2.98E+09 STENSRUD 13491 SUN POWAY CA 92064  
2.98E+09 CURRENT F O BORDER DEL MAR CA 92014  
2.98E+09 DELFINA D 1578 AIR V SAN DIEGO CA 92154  
2.98E+09 DELFINA D 1578 AIR V SAN DIEGO CA 92154  
2.99E+09 CURRENT F 2902 OCEA DEL MAR CA 92014-2032  
2.99E+09 DAVIS PHIL C/O NATAL 1590 CIRCLE DR SAN MARINO CA 91108  
2.99E+09 CURRENT F 2920 CAMI DEL MAR CA 92014-2033  
2.99E+09 2920 LLC 13525 D E PACIFIC PALISADES CA 90272  
2.99E+09 CURRENT F 2928 CAMI DEL MAR CA 92014-2033  
2.99E+09 2928 CAMI C/O SIGNI/ P O BOX 1029 MENLO PARK CA 94026  
2.99E+09 CURRENT F 2932 CAMI DEL MAR CA 92014-2033  
2.99E+09 MACK STE\ P O BOX 37 LAS VEGAS NV 89137  
2.99E+09 CURRENT F 2936 CAMI DEL MAR CA 92014-2032  
2.99E+09 OCEANS IN C/O SAWM 222 S MAIN AVE SIOUX FALLS SD 57104  
2.99E+09 CURRENT F 2938 SANC DEL MAR CA 92014-2041  
2.99E+09 JORST HEN C/O SCANI 1155 S ROCK BLVD #400 RENO NV 89502  
2.99E+09 CURRENT F 2940 SANC DEL MAR CA 92014-2041  
2.99E+09 INVESTOR 530 LOMA SOLANA BEACH CA 92075  
2.99E+09 CURRENT F 2984 SANC DEL MAR CA 92014-2041  
2.99E+09 CLARKE A I C/O CHARI 129 N WOODBURN DR LOS ANGELES CA 90049  
2.99E+09 CURRENT F 2986 SANC DEL MAR CA 92014-2041  
2.99E+09 BEDELL LIV C/O MELIN 545 N ALTURA RD ARCADIA CA 91007  
2.99E+09 GRAY FAM 2996 SANC DEL MAR CA 92014  
2.99E+09 CURRENT F 3000 SANC DEL MAR CA 92014-2000  
2.99E+09 ALESIA SH/ C/O W G& 10990 WILSHIRE BLVD #8 LOS ANGELES CA 90024  
2.99E+09 CURRENT F 3002 SANC DEL MAR CA 92014-2000  
2.99E+09 FLATLEY F/ 6725 CALLI RANCHO SANTA FE CA 92067  
2.99E+09 CURRENT F 3006 SANC DEL MAR CA 92014-2000  
2.99E+09 C 4 SANDY C/O CANNI 2520 ST ROSE PKWY #218 HENDERSON NV 89074  
2.99E+09 CURRENT F 3008 SANC DEL MAR CA 92014-2000  
2.99E+09 ALLRED FA P O BOX 74 DEL MAR CA 92014  
2.99E+09 CURRENT F 3010 SANC DEL MAR CA 92014-2000  
2.99E+09 WARREN C P O BOX 91 RANCHO SANTA FE CA 92067  
2.99E+09 CURRENT F 2618 OCEA DEL MAR CA 92014-2030  
2.99E+09 GABRIEL A 419 EVENII NEWPORT BEACH CA 92660  
2.99E+09 DEL MAR F 2614 OCEA DEL MAR CA 92014  
2.99E+09 CURRENT F 2610 OCEA DEL MAR CA 92014-2030  
2.99E+09 2610 OCEA P O BOX 5( RANCHO SANTA FE CA 92067  
2.99E+09 CURRENT F 2606 OCEA DEL MAR CA 92014-2030  
2.99E+09 Z E INVEST 1550 EL CA MENLO PARK CA 94025  
2.99E+09 CURRENT F 2600 OCEA DEL MAR CA 92014-2030

2.99E+09 JAMESON . P O BOX 20 DEL MAR CA 92014  
2.99E+09 GALLEGOS 2622 OCEA DEL MAR CA 92014  
2.99E+09 SIMON PET 2309 PLAZ LAS VEGAS NV 89102  
2.99E+09 CURRENT F 121 27TH S DEL MAR CA 92014-2017  
2.99E+09 SIMON PET 2309 PLAZ LAS VEGAS NV 89102  
2.99E+09 COOPER-H 2704 OCEA DEL MAR CA 92014  
2.99E+09 CURRENT F 2712 OCEA DEL MAR CA 92014-2031  
2.99E+09 BURKE REV 248 TORRE DEL MAR CA 92014  
2.99E+09 DEL MAR N 2720 OCEA DEL MAR CA 92014  
2.99E+09 CURRENT F 2728 OCEA DEL MAR CA 92014-2031  
2.99E+09 JACOBS FA 13974 BOC DEL MAR CA 92014  
2.99E+09 CURRENT F 2808 OCEA DEL MAR CA 92014-2040  
2.99E+09 PICKENS M 2683 VIA C DEL MAR CA 92014  
2.99E+09 GAYLORD I 2820 OCEA DEL MAR CA 92014  
2.99E+09 CURRENT F 2828 OCEA DEL MAR CA 92014-2040  
2.99E+09 COLEMAN C/O MATTI 105 REVERE DR #B NORTHBROOK IL 60062  
2.99E+09 CURRENT F 2528 OCEA DEL MAR CA 92014-2028  
2.99E+09 MCCARTH 10449 BAIL LOS ANGELES CA 90024  
2.99E+09 CURRENT F 2522 OCEA DEL MAR CA 92014-2028  
2.99E+09 MCCARTH C/O KATHI 10449 BAINBRIDGE AVE LOS ANGELES CA 90024  
2.99E+09 CURRENT F 2514 OCEA DEL MAR CA 92014-2028  
2.99E+09 HINDS INV 505 LOMA SOLANA BEACH CA 92075  
2.99E+09 2508 OCEA 2508 OCEA DEL MAR CA 92014  
2.99E+09 CURRENT F 2502 OCEA DEL MAR CA 92014-2028  
2.99E+09 COBRA KAI 4745 CAUC RENO NV 89519  
2.99E+09 CURRENT F 2430 OCEA DEL MAR CA 92014-2027  
2.99E+09 SINGER FA P O BOX 83 RANCHO SANTA FE CA 92067  
2.99E+09 CURRENT F 2418 OCEA DEL MAR CA 92014-2027  
2.99E+09 EBEL TRUS 3308 CORT CARLSBAD CA 92009  
2.99E+09 CURRENT F 2410 OCEA DEL MAR CA 92014-2027  
2.99E+09 RICHARDS( 95 SPANISI LAS VEGAS NV 89113  
2.99E+09 CURRENT F 2402 OCEA DEL MAR CA 92014-2027  
2.99E+09 MERCURIS 12 SUMMI PHILADELPHIA PA 19118  
2.99E+09 CURRENT F 2312 OCEA DEL MAR CA 92014-2135  
2.99E+09 WILLIAMS 6320 ELM( SAN DIEGO CA 92119  
2.99E+09 CURRENT F 2306 OCEA DEL MAR CA 92014-2135  
2.99E+09 2306 OCEA 1919 GRA SAN DIEGO CA 92109  
2.99E+09 CURRENT F 2318 OCEA DEL MAR CA 92014-2135  
2.99E+09 HASSANEI C/O SALAH 3565 1ST AVE #D SAN DIEGO CA 92103  
2.99E+09 CURRENT F 2212 OCEA DEL MAR CA 92014-2134  
2.99E+09 DEL MAR E C/O JOHN 310 62ND ST NEWPORT BEACH CA 92663  
2.99E+09 CURRENT F 2204 OCEA DEL MAR CA 92014-2134  
2.99E+09 ENSIGN DA 2700 E SUI LAS VEGAS NV 89120  
2.99E+09 CURRENT F 2124 OCEA DEL MAR CA 92014-2132  
2.99E+09 E W M INV 4325 W PA LAS VEGAS NV 89118  
2.99E+09 CURRENT F 2118 OCEA DEL MAR CA 92014-2132  
2.99E+09 MOORES JI 1207 CRES CARDIFF CA 92007

2.99E+09 CURRENT F 2112 OCEA DEL MAR CA 92014-2132  
2.99E+09 RANGLAS F P O BOX 91 RCHO SANTA FE CA 92067  
2.99E+09 CURRENT F 2102 OCEA DEL MAR CA 92014-2132  
2.99E+09 WOHLFOR PO BOX 50 RANCHO SANTA FE CA 92067  
2.99E+09 CURRENT F 2220 OCEA DEL MAR CA 92014-2134  
2.99E+09 HOFFMAN C/O TRACY 2220 OCEAN FRONT DEL MAR CA 92014  
2.99E+09 CURRENT F 2222 OCEA DEL MAR CA 92014-2134  
2.99E+09 CITY NATIC C/O ALAN 21275 ENTRADA RD TOPANGA CA 90290  
2.99E+09 CURRENT F 1936 OCEA DEL MAR CA 92014-2129  
2.99E+09 FOLDING C C/O JONAT 160 CHESTERFIELD DR #103 CARDIFF CA 92007  
2.99E+09 CURRENT F 1948 OCEA DEL MAR CA 92014-2129  
2.99E+09 LYON WILL 2456 PEET ESCONDIDO CA 92025  
2.99E+09 CURRENT F 1944 OCEA DEL MAR CA 92014-2129  
2.99E+09 WILSON TH C/O THOM 11150 SANTA MONICA BLVD #760 LOS ANGELES CA 90025  
2.99E+09 CURRENT F 1934 OCEA DEL MAR CA 92014-2129  
2.99E+09 MOORES R 12265 EL C SAN DIEGO CA 92130  
2.99E+09 CURRENT F 1924 OCEA DEL MAR CA 92014-2129  
2.99E+09 STARKEY E C/O SCOTT P O BOX 2312 RANCHO SANTA FE CA 92067  
2.99E+09 CURRENT F 1920 OCEA DEL MAR CA 92014-2129  
2.99E+09 CROUCH LI 11 RUE DE HENDERSON NV 89011  
2.99E+09 SLATE FAM 1916 OCEA DEL MAR CA 92014  
2.99E+09 CURRENT F 1912 OCEA DEL MAR CA 92014-2129  
2.99E+09 DEL MAR 5 5000 E AR/ PARADISE VLY AZ 85253  
2.99E+09 CURRENT F 1906 OCEA DEL MAR CA 92014-2129  
2.99E+09 BRANDES I P O BOX 51 RCHO SANTA FE CA 92067  
2.99E+09 CURRENT F 2004 OCEA DEL MAR CA 92014-2130  
2.99E+09 2004 OCEA 325 TECHN MALVERN PA 19355  
2.99E+09 CURRENT F 2008 OCEA DEL MAR CA 92014-2130  
2.99E+09 DUCKETT F 8316 CLAIF SAN DIEGO CA 92111  
2.99E+09 SYKES FAM 2016 OCEA DEL MAR CA 92014  
2.99E+09 CURRENT F 2020 OCEA DEL MAR CA 92014-2130  
2.99E+09 LINDSEY LL P O BOX 27 DEL MAR CA 92014  
2.99E+09 CURRENT F 2024 OCEA DEL MAR CA 92014-2130  
2.99E+09 COOPER TI 45 BELCOL NEWPORT BEACH CA 92660  
2.99E+09 CURRENT F 2028 OCEA DEL MAR CA 92014-2130  
2.99E+09 SULLIVAN . 1155 CAMI DEL MAR CA 92014  
2.99E+09 CURRENT F 2034 OCEA DEL MAR CA 92014-2130  
2.99E+09 WERNER JI 1880 CENT LOS ANGELES CA 90067  
2.99E+09 CURRENT F 2040 OCEA DEL MAR CA 92014-2130  
2.99E+09 BEAR E JO/ C/O CHRIS' 2280 S LAKELINE DR SALT LAKE CTY UT 84109  
2.99E+09 CURRENT F 2048 OCEA DEL MAR CA 92014-2130  
2.99E+09 HASNAIN F 4840 RANC SAN DIEGO CA 92130  
2.99E+09 CURRENT F 2050 OCEA DEL MAR CA 92014-2130  
2.99E+09 JORST HEN 1155 S RO( RENO NV 89502  
2.99E+09 CURRENT F 1828 OCEA DEL MAR CA 92014-2127  
2.99E+09 SEA AND S 2425 E CAI PHOENIX AZ 85016  
2.99E+09 CURRENT F 1834 OCEA DEL MAR CA 92014-2127

2.99E+09 K S MATTS P O BOX 54 VACAVILLE CA 95696  
2.99E+09 CURRENT F 1838 OCEA DEL MAR CA 92014-2127  
2.99E+09 SCRIPPS FA 4840 EL SE RANCHO SANTA FE CA 92091  
2.99E+09 CURRENT F 1844 OCEA DEL MAR CA 92014-2127  
2.99E+09 NAIFY MA 321 REDON LONG BEACH CA 90814  
2.99E+09 CURRENT F 1846 OCEA DEL MAR CA 92014-2127  
2.99E+09 HANLEY N 2425 E CAI PHOENIX AZ 85016  
2.99E+09 CURRENT F 1820 OCEA DEL MAR CA 92014-2127  
2.99E+09 RHODES IN 5222 W KA PARADISE VALLEY AZ 85253  
2.99E+09 CURRENT F 1818 OCEA DEL MAR CA 92014-2127  
2.99E+09 SIMMONS P O BOX 17 RANCHO SANTA FE CA 92067  
2.99E+09 CURRENT F 1816 OCEA DEL MAR CA 92014-2127  
2.99E+09 FLETCHER 6050 SANT SAN DIEGO CA 92124  
2.99E+09 CURRENT F 1812 OCEA DEL MAR CA 92014-2127  
2.99E+09 SURF VIEW P O BOX 82 RANCHO SANTA FE CA 92067  
2.99E+09 CURRENT F 1810 OCEA DEL MAR CA 92014-2127  
2.99E+09 DEMARCO 544 AVENI DEL MAR CA 92014  
2.99E+09 CURRENT F 1808 OCEA DEL MAR CA 92014-2127  
2.99E+09 FLETCHER 1436 HILLS EL CAJON CA 92020  
2.99E+09 CURRENT F 1802 OCEA DEL MAR CA 92014-2127  
2.99E+09 MOORES JI 1207 CRES CARDIFF CA 92007  
2.99E+09 CURRENT F O COAST BI DEL MAR CA 92014  
2.99E+09 DENYES AS 282 OCEAN DEL MAR CA 92014  
2.99E+09 CURRENT F 1750 OCEA DEL MAR CA 92014-2150  
2.99E+09 ANDERSON 1750 OCEA DEL MAR CA 92014  
2.99E+09 CURRENT F 1750 OCEA DEL MAR CA 92014-2150  
2.99E+09 MYER LIVIA 440 N BAR LOS ANGELES CA 90049  
2.99E+09 CURRENT F 1750 OCEA DEL MAR CA 92014-2150  
2.99E+09 T R E V T R 1305 VIA A DEL MAR CA 92014  
2.99E+09 CURRENT F 1750 OCEA DEL MAR CA 92014-2150  
2.99E+09 TREVROY C/O LOREE 1305 VIA ALTA DEL MAR CA 92014  
2.99E+09 CURRENT F 1750 OCEA DEL MAR CA 92014-2150  
2.99E+09 HENSLER R 4120 E LA ITUCSON AZ 85718  
2.99E+09 CURRENT F 1740 OCEA DEL MAR CA 92014-2125  
2.99E+09 J H P QUAL P O BOX 79 LAS VEGAS NV 89125  
2.99E+09 CURRENT F 1734 OCEA DEL MAR CA 92014-2125  
2.99E+09 KUHLE INV C/O VESTA 2425 E CAMELBACK RD #750 PHOENIX AZ 85016  
2.99E+09 S K L TRUS 1728 OCEA DEL MAR CA 92014  
2.99E+09 CURRENT F 1716 OCEA DEL MAR CA 92014-2125  
2.99E+09 K S MATTS P O BOX 54 VACAVILLE CA 95696  
2.99E+09 CURRENT F 1702 COAS DEL MAR CA 92014-2154  
2.99E+09 DEL MAR N 3444 CAMI SAN DIEGO CA 92108  
2.99E+09 CURRENT F 1660 COAS DEL MAR CA 92014-2354  
2.99E+09 DENYES AS 282 OCEAN DEL MAR CA 92014  
2.99E+09 POSEIDON 1670 COAS DEL MAR CA 92014