

WATER QUALITY REGULATIONS FOR CONSTRUCTION SITES

Dear Contractor,

The City of Del Mar Clean Water Program is committed to protecting our most valuable natural resources — our lagoons and Pacific Ocean — from degradation caused by urban runoff. We believe that reducing pollution is critical to maintaining our community's way of life.

It is our hope that this brochure will help you identify activities that are recognized to cause water pollution. It is up to you to implement appropriate Best Management Practices (BMPs) to minimize construction activity impacts. By providing you with these tools, we hope to make your job easier while keeping our waterways clean.

The City will be inspecting construction sites within its jurisdiction to ensure the protection of water quality. We look forward to seeing the BMPs presented in this brochure implemented at your site.

Together we have the ability to preserve and improve the quality of life in our community.

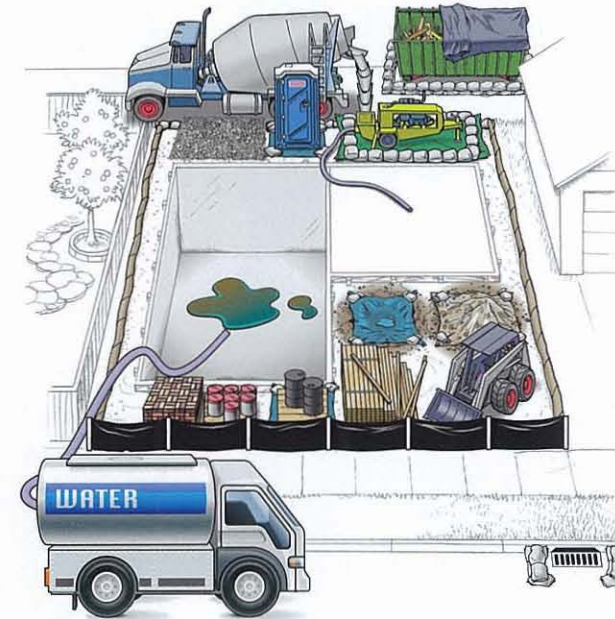
Sincerely,

The City of Del Mar Clean Water Program



City of Del Mar
858-755-9313

A POLLUTION PREVENTION GUIDE FOR THE CONSTRUCTION INDUSTRY

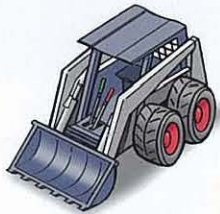


**CITY OF DEL MAR
CLEAN WATER PROGRAM**

Only Rain in the Storm Drain

WATER QUALITY REGULATIONS FOR CONSTRUCTION SITES

In 1972, the U.S. Environmental Protection Agency developed regulations to control water pollution. As a result, the National Pollutant Discharge Elimination System (NPDES) Permit was created. NPDES permits are issued to municipalities as well as construction sites. In addition to complying with local regulations, which are governed by the municipal NPDES permit, you may be required to obtain a permit through the State of California under the State General Construction Permit. All construction sites over one acre are required to obtain coverage under this permit. For more information, please visit the State Water Resources Control Board's website at: http://www.swrcb.ca.gov/water_issues/programs/stormwater/constpermits.shtml



Construction sites can contribute pollutants such as sediment, metals, and chemicals, to our local creeks, rivers, lagoons, and ocean. These pollutants make their way down our streets and into storm drains, eventually discharging to the nearest body of water.

All construction sites are required to implement Best Management Practices (BMPs) to prevent storm water pollution. This brochure is intended to assist your construction site in understanding the City's BMP requirements.

The City of Del Mar has staff dedicated to ensuring that all construction sites are in compliance with state and local storm water control regulations. Contact the City's Clean Water Program for more information.

ENCROACHMENT PERMITTING

The City understands that there are times when space on construction sites is limited. If at any point, you (as a contractor or subcontractor) need to use the public right-of-way in order to work or store materials, you must apply for a special permit. This encroachment permit allows you to use the City's right-of-way areas, and describes what is required to prevent illegal contaminants from spilling onto public right-of-ways and entering local storm drains. For more information or to obtain a permit application contact the City's Planning Department.



INSPECTION AND ENFORCEMENT PROGRAM

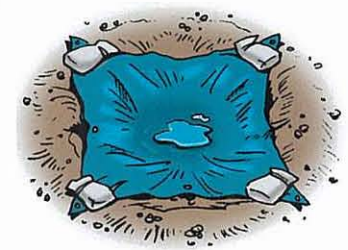
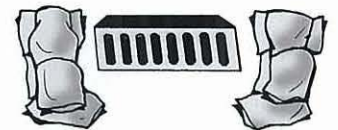
The City has established an inspection and enforcement program to ensure that all contractors operate in compliance with all appropriate storm water laws and other City requirements. City personnel will be performing unscheduled construction site inspections to confirm that BMPs and pollution prevention measures have been properly implemented at your site. Contractors, site supervisors and property owners can be held responsible for violations, which may lead to a civil penalty of up to \$10,000 per day and/or reimbursing the local jurisdiction for all expenses associated with clean up.



BEST MANAGEMENT PRACTICES

Construction materials such as paint, dirt and trash often find their way into our storm drains, polluting the environment and jeopardizing our creeks, rivers, lagoons, and ocean.

The City's Clean Water Program is working with contractors to implement what are known as Best Management Practices (BMPs) on all construction sites. That is, methods used to keep pollution out of our storm drains and off public property, such as sidewalks, streets, parkways and alleys. Implementing and maintaining these BMPs on the construction site is critical to protecting our ocean and lagoons.



The following is a list of minimum BMPs and pollution prevention measures that shall be implemented at all construction sites:

- 1 Conduct daily site cleanings.
- 2 Develop spill response and containment procedures.
- 3 Educate employees and subcontractors about BMPs.
- 4 Implement perimeter protection BMPs.
- 5 Implement an erosion control plan for wind and rain.
- 6 Regularly maintain all BMPs at project site.

BEST MANAGEMENT PRACTICES

The City of Del Mar's municipal code chapter 11.30 (Stormwater Management & Discharge Control Ordinance) prohibits pollutant discharges from construction sites and activities. Pollutant discharges are prohibited from flowing into City streets and storm drains to protect local lagoons and the ocean.

The following Best Management Practices (BMPs) must be properly implemented at all construction sites in the City of Del Mar to protect storm drains and minimize pollution.

DUMPSTERS/PORT-A-POTTY

Always cover dumpsters with a rollback tarp or lid. Areas around dumpsters should be swept daily. Perimeter controls should also surround dumpsters and all Port-a-Potties. If dumpsters or Port-a-Potties are kept on the street, encroachment permits are required.

PERIMETER CONTROLS

Gravel bags, silt fences, and straw wattles are acceptable perimeter controls, and must be used to surround the entire site to control run-on and run-off. Avoid running over perimeter controls with vehicles or heavy equipment, as they can damage the materials. Keep extra absorbent materials and/or a wet/dry vacuum on site to quickly pick up unintended spills. Sites must also be checked and maintained daily.

MATERIALS STORAGE

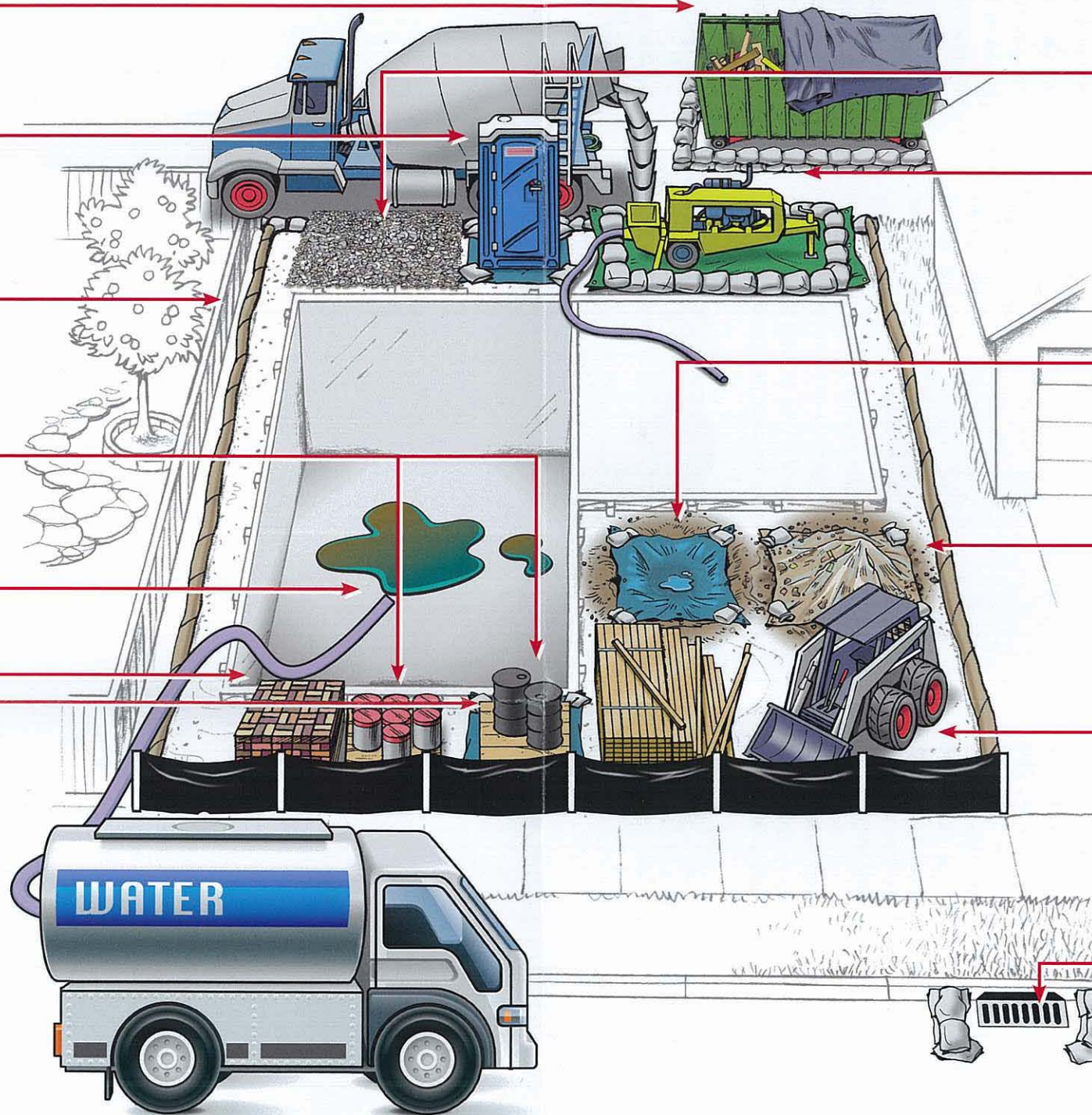
All building materials and fuel stored on the site must be contained and covered. It is illegal for contractors to wash out paint brushes in the street or dump any residues in the storm drain. Paint brushes and spray guns must be contained and disposed of properly.

BUILDING MATERIALS/ STAGING AREAS

Construction materials must be stored on site at all times unless an encroachment permit has been obtained. Building materials should always be covered when not in use to prevent run-off caused by wind or rain. To apply for an encroachment permit, contact the City of Del Mar Planning Department.

BASEMENT/SUMP DE-WATERING

Water collected in basements or detention basins due to natural groundwater seepage or rain events must be allowed to evaporate or be pumped to trucks with holding tanks for offsite disposal. Pumping this water onto the street or an adjacent property is an illegal discharge prohibited by law.



TRACKING CONTROLS

All entrances and exits on the site must have coarse gravel or steel shaker plates to limit offsite sediment tracking. Public roads must be swept to remove any dirt or materials tracked offsite.

CONCRETE TRUCKS/PUMPERS

Pumpers must be surrounded by perimeter controls, such as gravel bags. Plastic sheets also must be placed beneath concrete pumpers at all times, and residual materials must be cleaned up as well. Washout areas must be used whenever cleaning trucks.

WASHOUT AREA

The disposal of "wet" construction materials should be handled in the washout area. This includes paint, stucco and concrete. Use a berm and/or plastic sheet to collect and contain liquids and prevent run-off in nearby areas. The washout area must be checked and maintained daily to ensure compliance. Washout liquids must be disposed of properly. Washout areas should be adequately covered and protected during rain events.

DIRT AND GRADING

Mounds of dirt or gravel should be stored on site. These materials must also be covered each day with a tarp, visqueen, or other form of protection. Visqueen and/or tarps must be available and on site to cover 125% of exposed areas during the rainy season (October 1st – April 30th).

EARTHMOVING EQUIPMENT

All earthmoving equipment should be stored on site. Maintenance should also be conducted on the site, and tracks and trails left by equipment leading to and from the site should be cleaned up immediately.

STORM DRAINS

Storm drains must be protected at all times with perimeter controls, such as gravel bags or straw wattles. Sediment accumulation should be removed frequently.

If you have any questions, please contact the City's Clean Water Program at 858-755-9313.